

An abstract graphic consisting of several horizontal and vertical brushstrokes in various shades of grey and black, set against a dark teal background. The strokes are layered and textured, creating a sense of depth and movement.

ACUSTICO 12

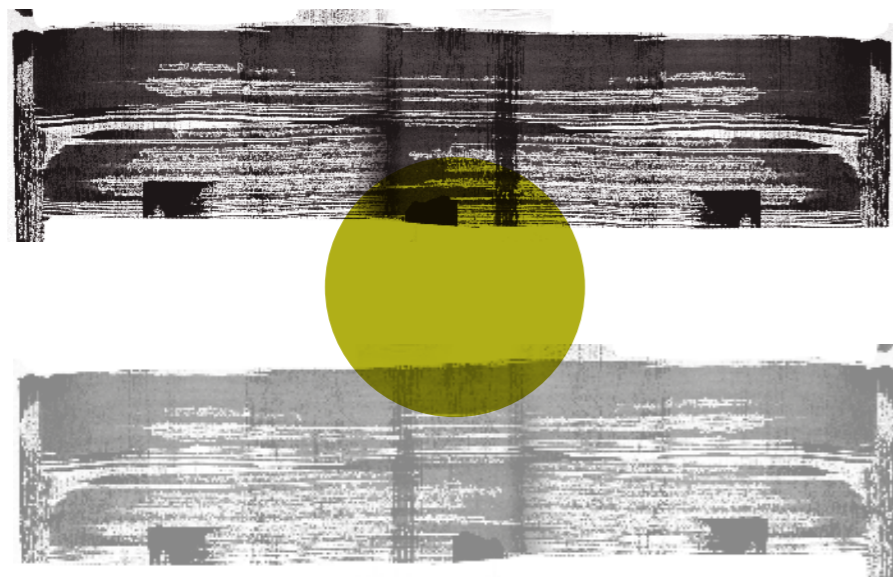
viva
MADE

12

il suono della terracotta,
colori **polverosi**

The sound of terracotta, dusty colours.
Le chant de la terre cuite, des couleurs poudrées.
Der Klang von Terrakotta, staubige Farben.
El sonido de la terracota, colores pulverulentos.
Звук терракоты, пыльные цвета.

(punti di vista)



point of view

idee in
movimento

Ever-developing ideas

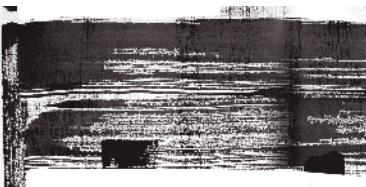
12



COTTO NAT. RETT.
60x120 - 23⁵/₈"x47¹/₄"



COTTO NAT. RETT.
60x120 - 23^{5/8}"x47^{1/4}"



WHITE NAT. RETT.
30x30 - 11^{13/16}"x11^{13/16}"





WHITE NAT. RETT.
30x30 - 11^{13/16}"x11^{13/16}"

12

forme ampie e armonia

Ample dimensions and harmony

differences / analogies



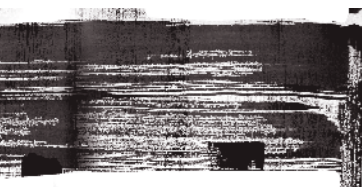
(differenze) (analogie)

COTTO NAT. RETT.
30x30 - 11^{13/16}"x11^{13/16}"



WHITE NAT. RETT. 60x120 - 23⁵/₈"x47¹/₄" WHITE NAT. RETT. 60x60 - 23⁵/₈"x23⁵/₈" WHITE NAT. RETT. 30x60 - 11¹³/₁₆"x23⁵/₈" WHITE NAT. RETT. 30x30 - 11¹³/₁₆"x11¹³/₁₆"



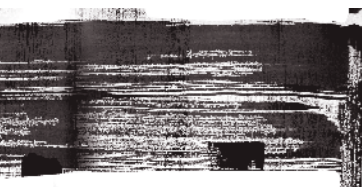


GREY NAT. RETT.
30x30 - 11^{13/16}"x11^{13/16}"



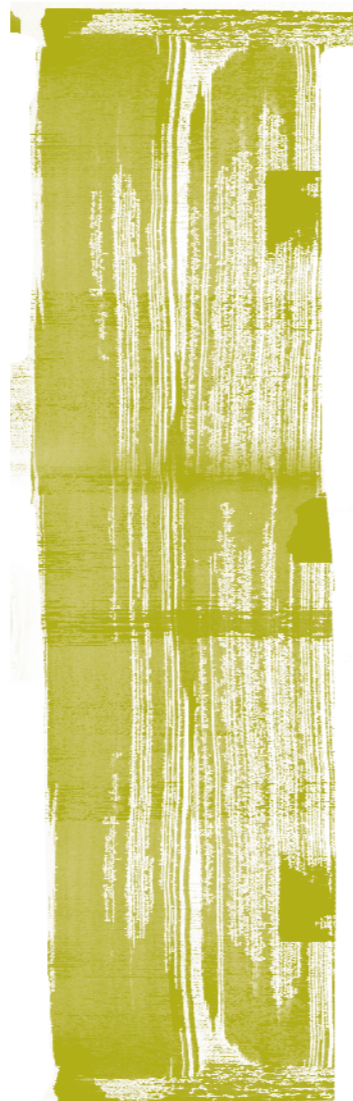
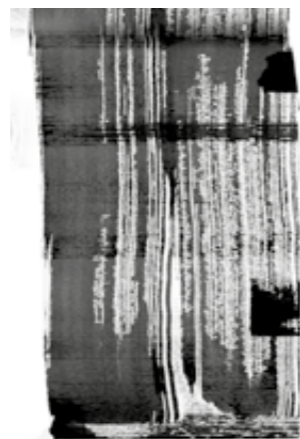
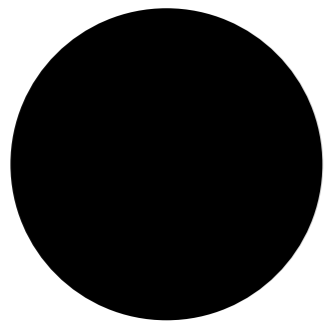


GREY NAT. RETT.
30x30 - 11^{13/16}"x11^{13/16}"



GREY NAT. RETT.
60x60 - 23^{5/8}"x23^{5/8}"





(evoluzione)

le dimensioni si **espandono**
per rispondere
al contemporaneo

Sizes expand, reflecting contemporary tastes

12

evolution

GREY NAT. RETT.
30x30 - 11^{13/16}"x11^{13/16}"





GREY NAT. RETT.
60x60 - 23⁵/₈"x23⁵/₈"



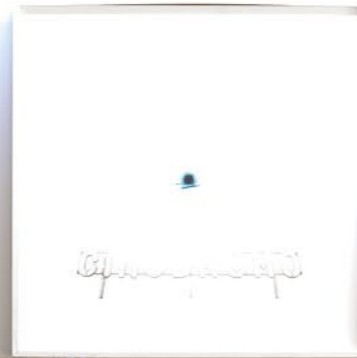
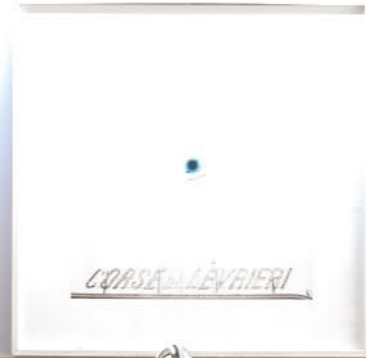


GREY NAT. RETT.
60x120 - 23^{5/8}"x47^{1/4}"

WHITE NAT. RETT.
60x60 - 23⁵/₈"x23⁵/₈"

PAGLIA METROPOLI - STATALE9
15x120 - 57⁷/₈"x47¹/₄"

PAGLIA - STATALE9
15x120 - 57⁷/₈"x47¹/₄"



solutions

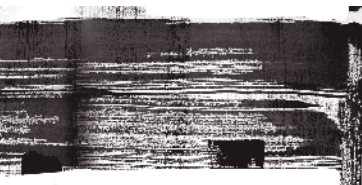
Evolution and style

evoluzione e
stile

12

(soluzioni)





WHITE NAT. RETT.
60x120 - 23⁵/₈"x47¹/₄"

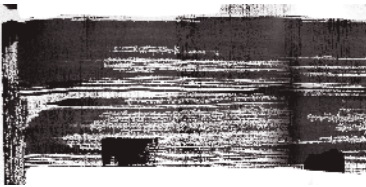


GREY NAT. RETT.
30x120 - 11¹³/₁₆"x47¹/₄"





SAND NAT. RETT.
60x60 - 23^{5/8}"x23^{5/8}"



SAND NAT. RETT.
30x60 - 11^{13/16}"x23^{5/8}"



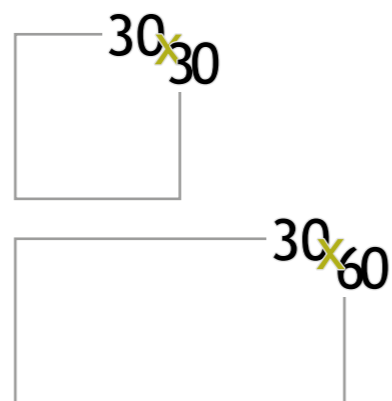
GREY NAT. RETT.
30x60 - 11^{13/16}"x23^{5/8}"

a different surfaces



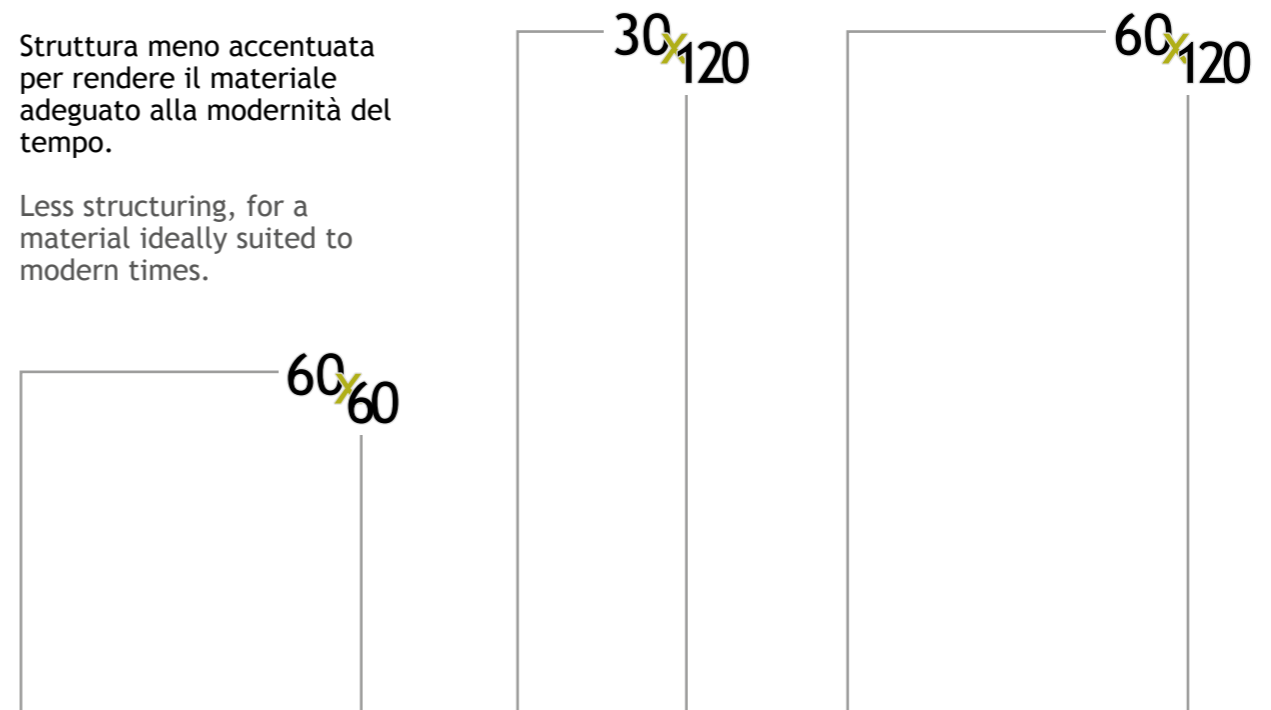
Struttura più accentuata al fine di proporre fedelmente lo spirito naturale della terracotta.

More structured surface, to express all the natural spirit of terracotta.



Struttura meno accentuata per rendere il materiale adeguato alla modernità del tempo.

Less structuring, for a material ideally suited to modern times.



colori/formati

WHITE



60x120 - 23^{5/8}"x47^{1/4}"
E7CP White Nat. Rett.

● 79B



60x60 - 23^{5/8}"x23^{5/8}"
E22P White Nat. Rett.

● 71



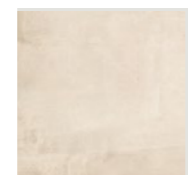
30x60 - 11^{3/16}"x23^{5/8}"
E24Z White Nat. Rett.

● 71



30x120 - 11^{3/16}"x47^{1/4}"
E22J White Nat. Rett.

● 80



30x30 - 11^{3/16}"x11^{3/16}"
E24K White Nat. Rett.

● 67

COTTO



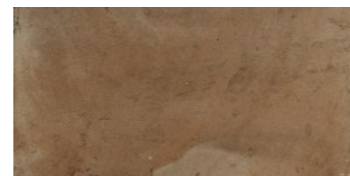
60x120 - 23^{5/8}"x47^{1/4}"
E7CQ Cotto Nat. Rett.

● 79B



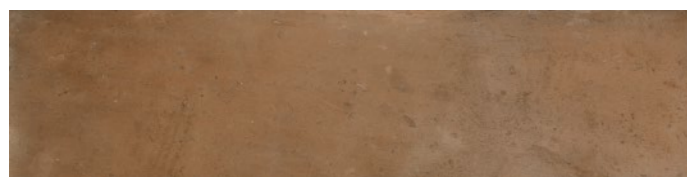
60x60 - 23^{5/8}"x23^{5/8}"
E22Q Cotto Nat. Rett.

● 71



30x60 - 11^{3/16}"x23^{5/8}"
E250 Cotto Nat. Rett.

● 71



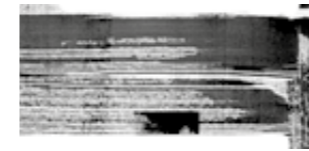
30x120 - 11^{3/16}"x47^{1/4}"
E22K Cotto Nat. Rett.

● 80



30x30 - 11^{3/16}"x11^{3/16}"
E24L Cotto Nat. Rett.

● 67



colori/formati

SAND



60x120 - 23^{5/8}"x47^{1/4}"
E7CR Sand Nat. Rett. U₃P₃E₃C₂

● 79B



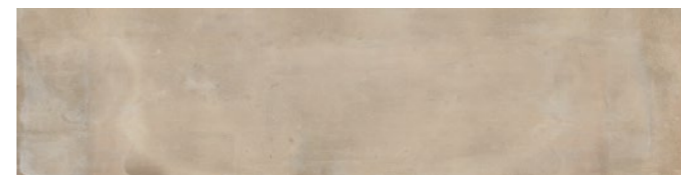
60x60 - 23^{5/8}"x23^{5/8}"
E22R Sand Nat. Rett. U₃P₃E₃C₂

● 71



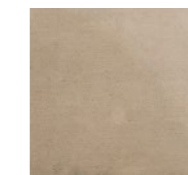
30x60 - 11^{3/16}"x23^{5/8}"
E251 Sand Nat. Rett.

● 71



30x120 - 11^{3/16}"x47^{1/4}"
E22L Sand Nat. Rett.

● 80



30x30 - 11^{3/16}"x11^{3/16}"
E24M Sand Nat. Rett. U₃P₃E₃C₂

● 67

GREY



60x120 - 23^{5/8}"x47^{1/4}"
E7CT Grey Nat. Rett.

● 79B



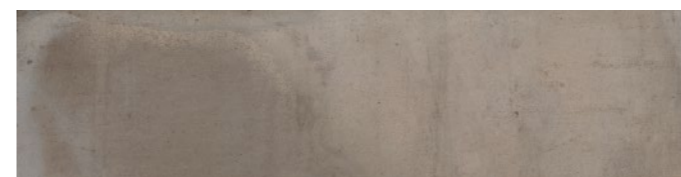
60x60 - 23^{5/8}"x23^{5/8}"
E22T Grey Nat. Rett.

● 71



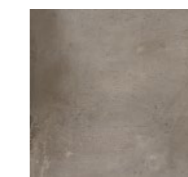
30x60 - 11^{3/16}"x23^{5/8}"
E253 Grey Nat. Rett.

● 71



30x120 - 11^{3/16}"x47^{1/4}"
E22N Grey Nat. Rett.

● 80

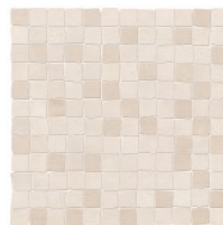


30x30 - 11^{3/16}"x11^{3/16}"
E24P Grey Nat. Rett.

● 67

MOSAICO*

TESSERA/CHIP 2,3x2,3 (7/8" x 7/8")



30x30 - 11¹³/₁₆" x 11¹³/₁₆"
E25E White Nat. ● 101



30x30 - 11¹³/₁₆" x 11¹³/₁₆"
E25G Sand Nat. ● 101



30x30 - 11¹³/₁₆" x 11¹³/₁₆"
E25F Cotto Nat. ● 101



30x30 - 11¹³/₁₆" x 11¹³/₁₆"
E25J Grey Nat. ● 101

* Su rete in fibra - On fibre mesh backing - Sur filet en fibre de verre - Auf Glasfasernetz - Sobre malla de fibra - На волоконной сетке

trims - pieces speciales - formteile - piezas especiales - специальные изделия

pezzi speciali

	Dimensione Size					Fascia di prezzo Price band
 Battiscopa - Skirting	Nat. Rett. 7x60 - 2 ³ / ₄ " x 23 ⁵ / ₈ " Pcs. Box. 14 - LM x Box 8,40	E28P	E28R	E28Q	E28T	● 10
 Battiscopa Scala Tread Skirting	Nat. Rett. 7x60x60 2 ³ / ₄ " x 23 ⁵ / ₈ " x 23 ⁵ / ₈ " Pcs. Box 2 - LM x Box 1,20	DX E93M	DX -	DX E93P	DX E93R	● 45
		SX E93N	SX -	SX E93Q	SX E93S	
 Battiscopa Scala Dx Sx Tread Skirting Dx Sx	Nat. Rett. 7x60x60 2 ³ / ₄ " x 23 ⁵ / ₈ " x 23 ⁵ / ₈ " Pcs. Box 2 - LM x Box 1,20	DX E2VX	DX -	DX E940	DX E942	● 45
		SX E93Z	SX -	SX E941	SX E943	
 Gradone - Step	Nat. Rett. 33x120x3,2x3,2 12 ¹⁵ / ₁₆ " x 47 ¹ / ₄ " x 1 ¹ / ₄ " x 1 ¹ / ₄ " Pcs. Box 2 - LM x Box 2,40	E8E2	E8E4	E8E3	E8E6	● 96
 Angolare Dx Sx Corner Tile Dx Sx	Nat. Rett. 33x120x3,2x3,2 12 ¹⁵ / ₁₆ " x 47 ¹ / ₄ " x 1 ¹ / ₄ " x 1 ¹ / ₄ " Pcs. Box 1 - LM x Box 1,20	DX E8DQ	DX E8DT	DX E8DR	DX E8DX	● 98
		SX E28D	SX E8DU	SX E8DS	SX E8DY	
 Angolare - Corner Tile	Nat. Rett. 33x33x3,2x3,2 12 ¹⁵ / ₁₆ " x 12 ¹⁵ / ₁₆ " x 1 ¹ / ₄ " x 1 ¹ / ₄ " Pcs. Box 2 - LM x Box 0,66	E8E7	E8E9	E8E8	E8EC	● 86

ACUSTICO 12

Dry - Pressed Ceramic Tiles ISO 13006 Annex G - UNI EN 14411 Annex G - Bla GL

CARATTERISTICHE TECNICHE Technical Features - Caracteristiques Techniques - Technische Eigenschaften Technische Eigenschaften - Caracteristicas Tecnicas - Технические Характеристики	NORMA Standard - Norme Norm - Norma - Норма	VALORI Value - Valeur Vorgabe - Valor - Средние
 ASSORBIMENTO D'ACQUA (VALORE MEDIO IN %) Water absorption (Average value expressed in %) - Absorption d'eau (Valeur moyenne en %) Wasseraufnahme (Durchschnittswert in %) - Absorción de agua (Valor medio en %) - Поглощение воды	UNI EN ISO 10545/3 ASTM C373	CONFORME COMPLIANT
 RESISTENZA ALLA FLESSIONE Modulus of rupture - Resistance a la flexion - Biegefestigkeit Resistencia a la flexion - Прочность на изгиб	SPESSORE UNI EN ISO 10545/4	10 mm ≥ 45 N/mm ²
 FORZA DI ROTTURA Breaking strength - Résistance à la rupture - Bruchlast - Resistencia a la rotura - Разрывное усилие	UNI EN ISO 10545/4 ASTM C648	≥ 2000 N 400 Lbs
 RESISTENZA AL GELO Frost resistance - Résistance au gel - Frostbeständigkeit Resistencia a las heladas - Морозостойкость	UNI EN ISO 10545/12 ASTM C1026	CONFORME UNAFFECTED
 RESISTENZA CHIMICA AD ALTE E BASSE CONCENTRAZIONI DI ACIDI E BASI Chemical resistance to high and low acid and basic concentrations Résistance chimique aux hautes et basses concentrations d'acides et de bases Chemikalienfestigkeit bei hohen und niedrigen Konzentrationen von Säuren und Basen Resistencia química con concentraciones altas y bajas de ácidos y bases Химическая стойкость к высоким и низким концентрациям кислот и щелочей	UNI EN ISO 10545/13 ASTM C-650	A - LA - HA UNAFFECTED
 RESISTENZA ALLE MACCHIE Stain resistance - Résistance aux taches - Fleckenbeständigkeit Resistencia a las manchas - Стойкость к образованию пятен	UNI EN ISO 10545/14	5
 COEFFICIENTE DI ATTRITO Slip resistance Coefficient de glissement Rutschfestigkeit Barfußbereich Coeficiente de atrito medio Коэффициент трения	DIN 51130 DGUV Regel 108-003	R10
	DIN 51097 DGUV Information 207-006	B (A+B)
	ANSI A326.3:2017 DCOF	WET ≥ 0,50
	B.C.R.A. D.M. N. 236 14/6/89	≥ 0,40
	AS 4586-2013 Anexo A	P2
	BS 7976-2: 2002 BSEN13036-4:2011 Pendulum testers	< 36 Moderate Slip potential
	UNE 41901:2017 EX DB SUA (actual)	2

Per maggiori chiarimenti sui dati tecnici e sulla garanzia consultare il catalogo generale in vigore. - For further information on technical specifications, please consult our up-dated general catalogue. - Pour toutes informations supplémentaires sur les données techniques et sur les garanties, veuillez consulter le catalogue general en vigueur. - Für weitere Informationen über technische Daten und Garantie beziehen sie sich bitte auf den aktuellen Gesamtkatalog. - Para ultiores informaciones sobre los datos tecnicos y la garantia, vease el catalogo general en vigor. - Более подробную информацию о технических данных и гарантии смотрите в действующем сводном катал.



Formato Size Format Format Tamaño Формат cm	Spessore Thickness Epaisseur Stärke Espesor Толщина mm	Pz. x Mq. Pieces x Sqm Pcs / M ² Stk. x Qm Pzs x Mv. Шт x Кв.М.	Pz. x Scat. Pieces x Box Pcs / Bte Stk. x Krt. Pzs x Caja Шт x Кор.	Mq. x Scat. Sqm x Box M ² / Bte Qm x Krt. Mv. x Caja Кв.М. x Кор.	Peso x Scat. Weight x Box Poids / Bte Gewicht x Krt. Peso x Caja Вес x Кор. Kg	Scat. x Pal. Boxes x Pal. Bte / Pal. Krt. x Pal. Cajas x Pal. Кор. x Подд.	Mq. x Pal. Sqm x Pal. M ² / Pal. Qm x Pal. Mv. x Pal. Кв.М x Подд.	Peso x Pal. Weight x Pal. Poids / Pal. Gewicht x Pal. Peso x Pal. Вес x Подд. Kg
60x120 Naturale	10	1,39	2	1,440	33,99	36	51,84	1224
30x120 Naturale	10	2,78	4	1,440	33,43	36	51,84	1203
60x60 Naturale	10	2,78	3	1,080	24,57	40	43,20	983
30x60 Naturale	10	5,56	6	1,080	24,03	40	43,20	961
30x30 Naturale	10	11,11	12	1,080	23,91	40	43,20	956
30x30 Mosaico	10	11,11	5	0,450	10,50	60	27,00	630





Viva is a brand of Emilceramica S.r.l. a socio unico	Sede Commerciale/ Amministrativa
emilgroup.it/viva emilgroup.it	Via Ghiarola Nuova, 29 - 41042 Fiorano Modenese (Mo) Italy T +39 0536 835111 - info@emilceramicagroup.it